



## Pioneer® GrowingPoint® Agronomy Plot Results

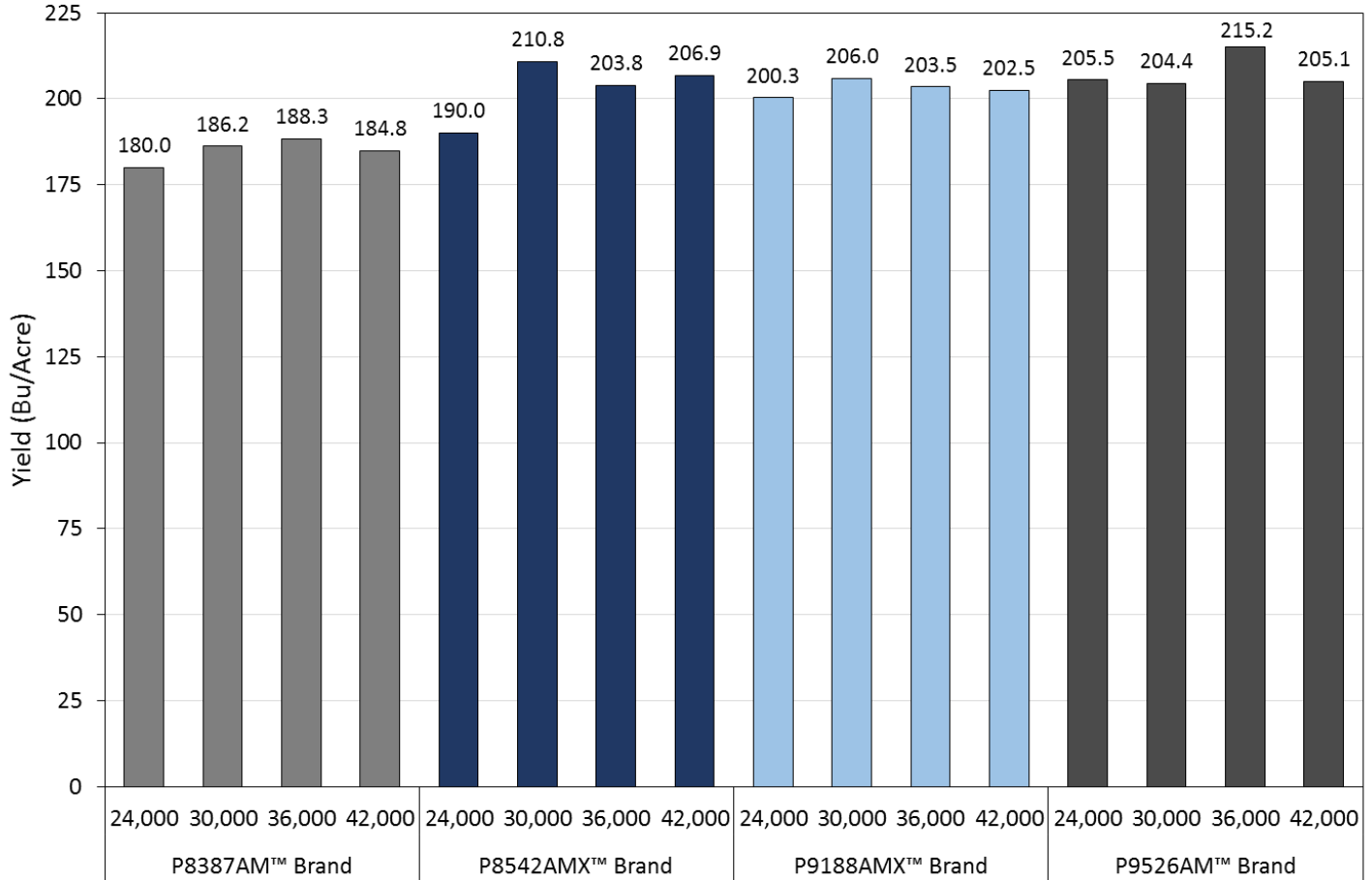
<b>Grower's Name:</b>	<u>K &amp; B Grain Farms L.L.C</u>	<b>Irrigation:</b>	<u>None</u>
<b>City, State:</b>	<u>Edgar, WI</u>	<b>Planting Date:</b>	<u>May 1, 2015</u>
<b>County:</b>	<u>Marathon</u>	<b>Harvest Date:</b>	<u>November 8, 2015</u>
<b>Row Width:</b>	<u>30 inches</u>	<b>Weigh Device:</b>	<u>Yield Monitor</u>
<b>Previous Crop:</b>	<u>Soybean</u>	<b>No Rows:</b>	<u>8</u>

Entry Number	Hybrid/Brand <sup>1</sup>	CRM	Population (1/1000 <sup>th</sup> Acre)	Yield (Bu/A)	Moisture (%)	AGI (\$/Acre)	Yield Rank
1	P8387AM™ Brand	83	24.0	<b>180.0</b>	19.5	\$598	16
4	P8387AM™ Brand	83	30.0	<b>186.2</b>	19.1	\$621	14
5	P8387AM™ Brand	83	36.0	<b>188.3</b>	18.7	\$632	13
8	P8387AM™ Brand	83	42.0	<b>184.8</b>	18.6	\$620	15
2	P8542AMX™ Brand	85	24.0	<b>190.0</b>	20.3	\$625	12
3	P8542AMX™ Brand	85	30.0	<b>210.8</b>	20.5	\$691	2
6	P8542AMX™ Brand	85	36.0	<b>203.8</b>	20.6	\$668	8
7	P8542AMX™ Brand	85	42.0	<b>206.9</b>	20.7	\$677	3
16	P9188AMX™ Brand	91	24.0	<b>200.3</b>	22.4	\$641	11
13	P9188AMX™ Brand	91	30.0	<b>206.0</b>	22.8	\$656	4
12	P9188AMX™ Brand	91	36.0	<b>203.5</b>	23.6	\$643	9
9	P9188AMX™ Brand	91	42.0	<b>202.5</b>	23.5	\$640	10
15	P9526AM™ Brand	95	24.0	<b>205.5</b>	22.4	\$658	5
14	P9526AM™ Brand	95	30.0	<b>204.4</b>	23.3	\$648	7
11	P9526AM™ Brand	95	36.0	<b>215.2</b>	23.2	\$683	1
10	P9526AM™ Brand	95	42.0	<b>205.1</b>	23.6	\$647	6

Pioneer® brand products are provided subject to the terms and conditions of purchase which are part of the labeling and purchase documents.  
 ®, ™, SM Trademarks and service marks of DuPont, Pioneer or their respective owners. © 2015 PHIL.

## Pioneer® GrowingPoint® Agronomy Plot Results

### Hybrid x Plant Population Summary



Pioneer® corn hybrids/brands<sup>1</sup>



Data is based on average of 2015 results in Edgar, WI through November 8, 2015. Product responses are variable and subject to any number of environmental, disease and pest pressures. Individual results may vary. Multi-year and multi-location data are a better predictor of future performance. DO NOT USE THIS OR ANY OTHER DATA FROM A LIMITED NUMBER OF TRIALS AS A SIGNIFICANT FACTOR IN PRODUCT SELECTION. Refer to [www.pioneer.com/products](http://www.pioneer.com/products) or contact a Pioneer sales representative or authorized dealer for the latest and complete listing of traits and scores for each Pioneer® brand product.

<sup>1</sup> All Pioneer products are hybrids unless designated with AM1, AM, AMT, AMRW, AMX and AMXT, in which case they are brands.

**TECHNOLOGY SEGMENT: AM1** - Optimum® AcreMax® 1 Insect Protection System with an integrated corn rootworm refuge solution includes HXX, LL, RR2. Optimum AcreMax 1 products contain the LibertyLink® gene and can be sprayed with Liberty® herbicide. The required corn borer refuge can be planted up to half a mile away. **AM** - Optimum® AcreMax® Insect Protection system with YGCB, HX1, LL, RR2. Contains a single-bag integrated refuge solution for above-ground insects. In EPA-designated cotton growing counties, a 20% separate corn borer refuge must be planted with Optimum AcreMax products. **AMRW**— Optimum® AcreMax® RW Rootworm Protection system with a single-bag integrated corn rootworm refuge solution includes HXRW, LL, RR2. **AMX** — Optimum® AcreMax® Xtra Insect Protection system with YGCB, HXX, LL, RR2. Contains a single-bag integrated refuge solution for above- and below-ground insects. In EPA-designated cotton growing counties, a 20% separate corn borer refuge must be planted with Optimum AcreMax Xtra products. **HXX** - Herculex® XTRA contains the Herculex I and Herculex RW genes. **AMXT** (Optimum® AcreMax® XTreme) - Contains a single-bag integrated refuge solution for above- and below-ground insects. The major component contains the Agrisure® RW trait, the YieldGard® Corn Borer gene, and the Herculex® XTRA genes. In EPA-designated cotton growing counties, a 20% separate corn borer refuge must be planted with Optimum AcreMax XTreme products. **HXRW** - The Herculex® RW insect protection trait contains proteins that provide enhanced resistance against western corn rootworm, northern corn rootworm and Mexican corn rootworm. **HXX** - Herculex® XTRA contains the Herculex I and Herculex RW genes. **HX1** - Contains the Herculex® I Insect Protection gene which provides protection against European corn borer, southwestern corn borer, black cutworm, fall armyworm, western bean cutworm, lesser corn stalk borer, southern corn stalk borer, and sugarcane borer; and suppresses corn earworm. **YGCB** - The YieldGard® Corn Borer gene offers a high level of resistance to European corn borer, southwestern corn borer and southern cornstalk borer; moderate resistance to corn earworm and common stalk borer; and above average resistance to fall armyworm. **LL** - Contains the LibertyLink® gene for resistance to Liberty® herbicide. **RR2** - Contains the Roundup Ready® Corn 2 trait that provides crop safety for over-the-top applications of labeled glyphosate herbicides when applied according to label directions. Herculex® Insect Protection technology by Dow AgroSciences and Pioneer Hi-Bred. Herculex® and the HX logo are registered trademarks of Dow AgroSciences LLC. YieldGard®, the YieldGard Corn Borer Design and Roundup Ready® are registered trademarks used under license from Monsanto Company. Liberty®, LibertyLink® and the Water Droplet Design are trademarks of Bayer. Agrisure® is registered trademarks of, and used under license from, a Syngenta Group Company. Agrisure® technology incorporated into these seeds is commercialized under a license from Syngenta Crop Protection AG. **Product performance in water-limited environments is variable and depends on many factors such as the severity and timing of moisture deficiency, heat stress, soil type, management practices and environmental stress as well as disease and pest pressures. All hybrids may exhibit reduced yield under water and heat stress. Individual results may vary.** Pioneer® brand products are provided subject to the terms and conditions of purchase which are part of the labeling and purchase documents. ®, ™, SM Trademarks and service marks of DuPont, Pioneer or their respective owners. © 2015 PHIL. [10-6-15-j]